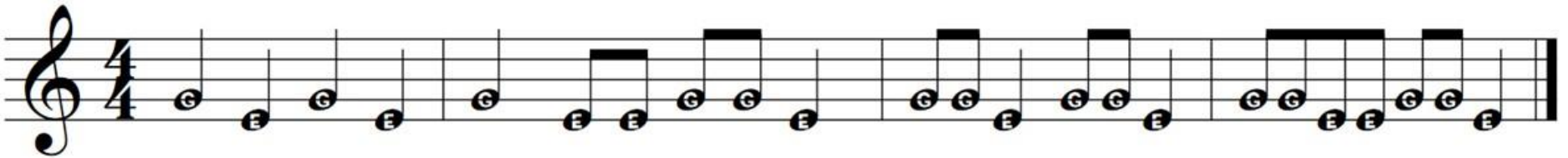
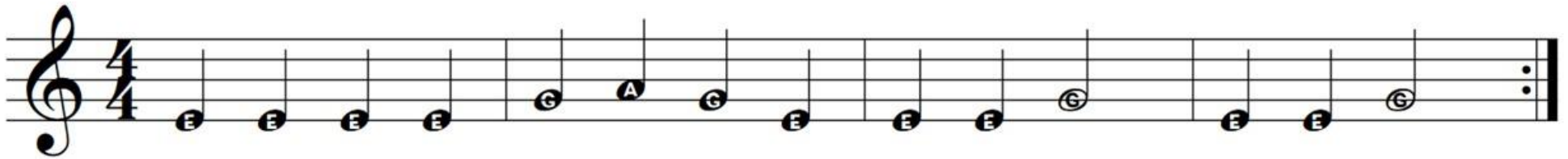


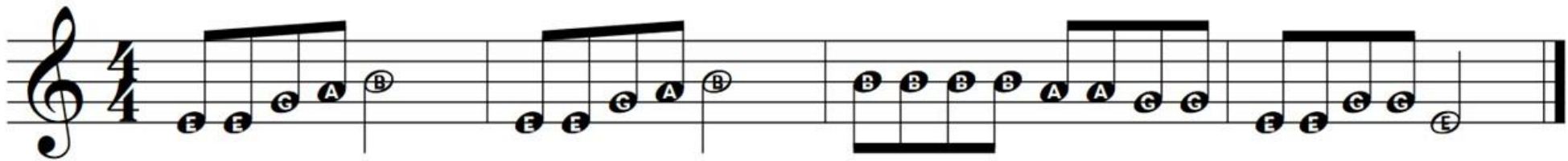
Star Light, Star Bright



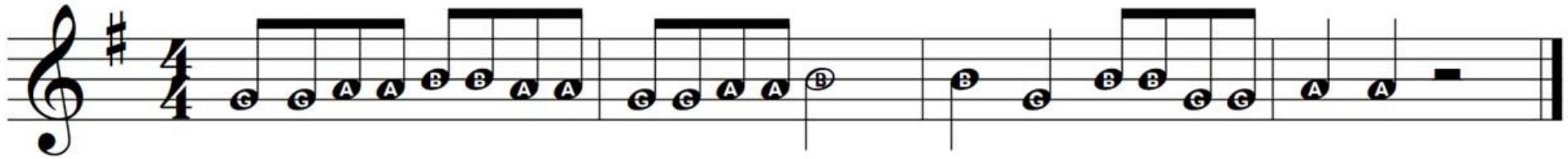
Hammer Ring



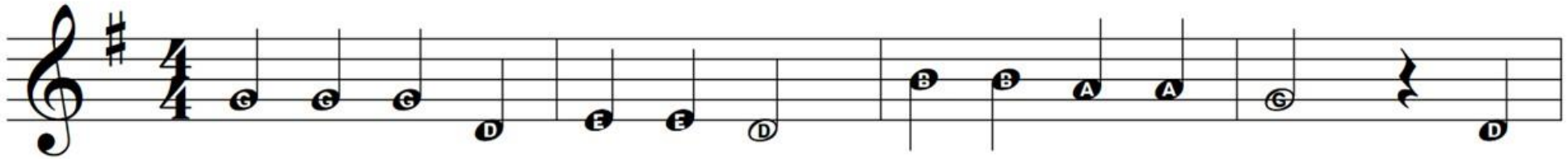
Who Has Seen The Wind



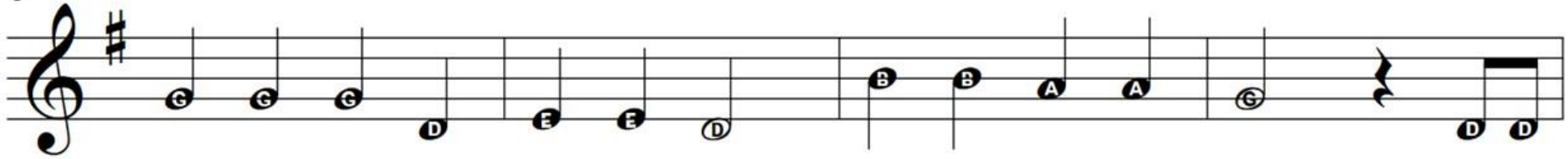
Rocket Cruiser



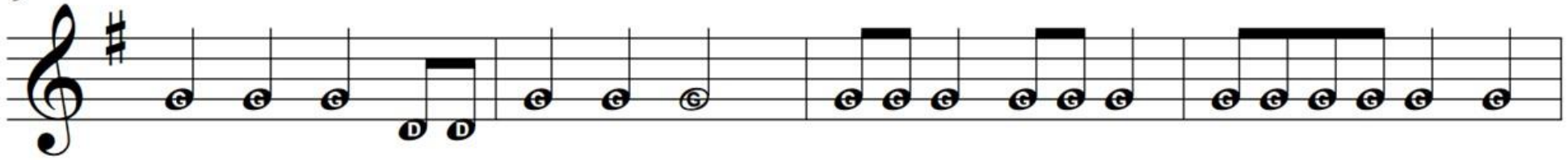
Old MacDonald Had A Farm



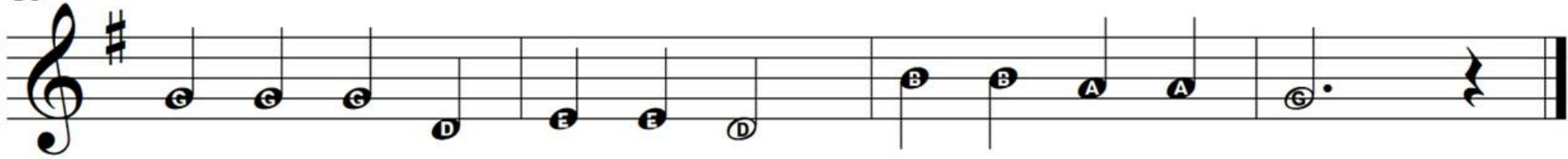
5



9



13



Wayfaring Stranger

Musical score for "Wayfaring Stranger" in treble clef, 3/4 time, key of D major. The score consists of four staves of music with chord markings.

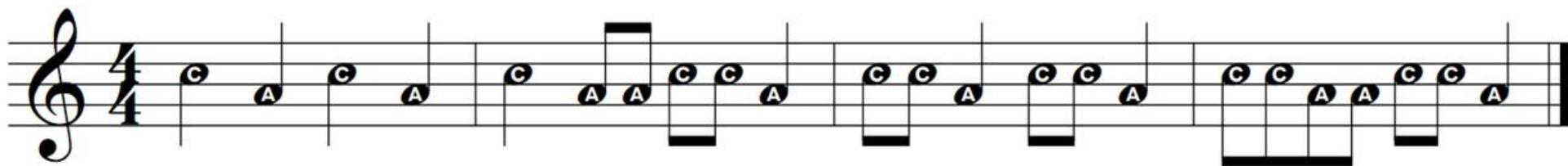
Staff 1 (Measures 1-4):
Measure 1: E4, E4
Measure 2: B4, B4.
Measure 3: A4, A4
Measure 4: B4, A4, G4, E4

Staff 2 (Measures 5-8):
Measure 5: E4, E4
Measure 6: B4, A4.
Measure 7: E4, G4, A4
Measure 8: B4.

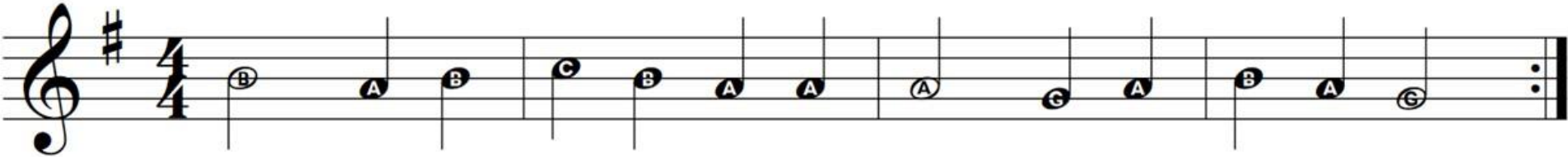
Staff 3 (Measures 9-12):
Measure 9: E4, E4
Measure 10: B4, B4.
Measure 11: A4, A4
Measure 12: B4, A4, G4, E4

Staff 4 (Measures 13-16):
Measure 13: E4, E4
Measure 14: A4.
Measure 15: G4, E4, D4
Measure 16: E4.

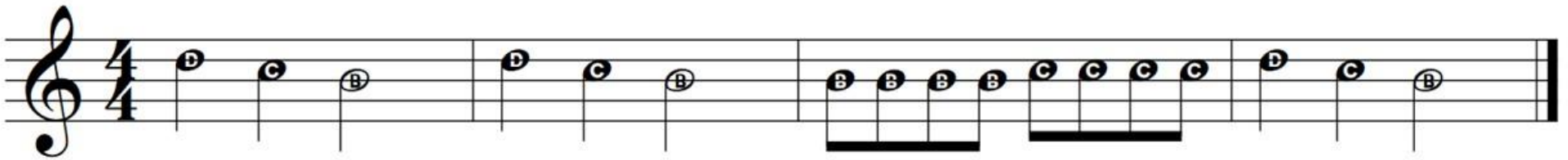
Star Light, Star Bright



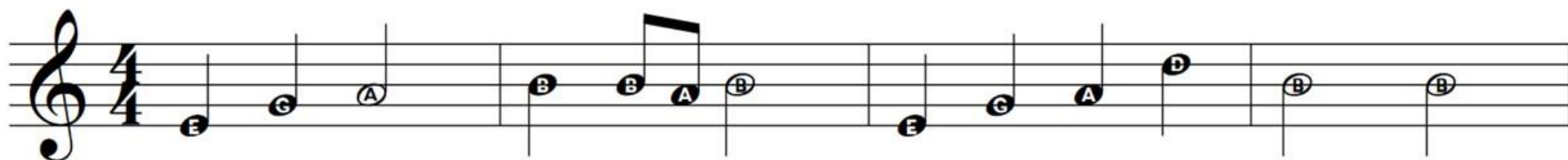
La Capucine



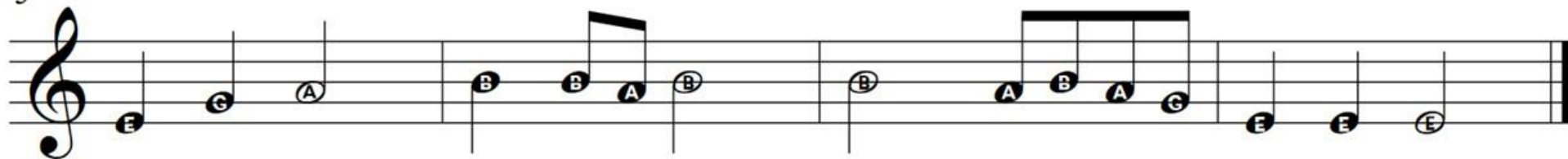
Harmonious Buns



Misty Mountain Morning



5



Twinkle, Twinkle, Little Star

The musical score for "Twinkle, Twinkle, Little Star" is presented in three staves. The key signature is D major (two sharps) and the time signature is 4/4. The notes are lettered as follows:

Staff 1 (Measures 1-4): D, D, A, A, B, B, A, G, G, F, F, E, E, D.

Staff 2 (Measures 5-8): A, A, G, G, F, F, E, A, A, G, G, F, F, E.

Staff 3 (Measures 9-12): D, D, A, A, B, B, A, G, G, F, F, E, E, D.

My Father's House

5 Won't you come with me to my fath - er's house,

9 to my fath - er's house, to my fath - er's house.

13 Won't you come with me to my fath - er's house there is

peace, peace, peace.

Bransle De Champagne

The musical score for "Bransle De Champagne" is written in G major (one sharp) and 4/4 time. It consists of four staves of music. The first two staves (measures 1-8) feature a simple melody with notes G, A, B, B, C, B, A, G, B, B, A, G, A, A. The third and fourth staves (measures 9-16) feature a more complex melody with notes D, D, B, B, A, B, C, A, B, C, D, D, B, B, A, B, C, A, B. The score concludes with the instruction "D.C. al Fine" and a double bar line.

5 *Fine*

9

13 *D.C. al Fine*